

SATTLER

the highTEX company



SOLIDS





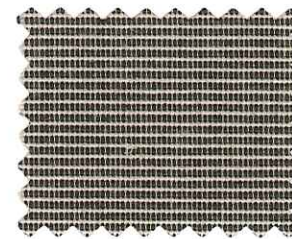
314 008 UV80



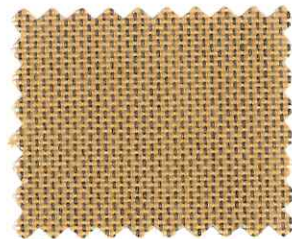
314 013 UV80



314 016 UV80



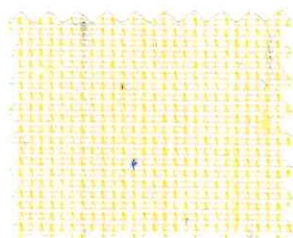
314 403 UV80



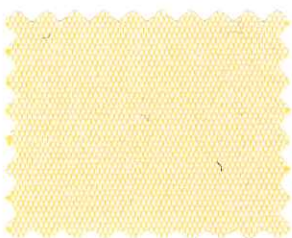
364 570 UV80



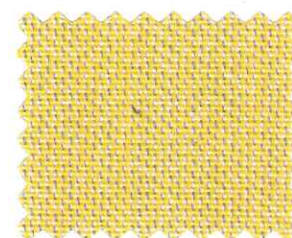
314 033 UV40



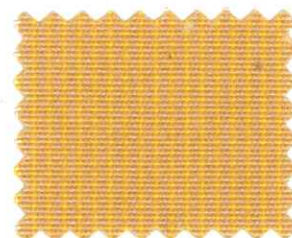
314 583 UV60



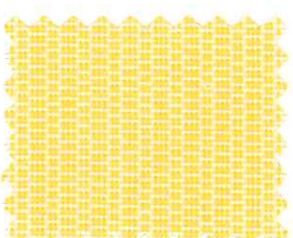
314 947 UV60



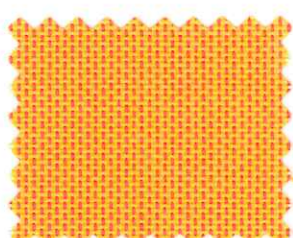
314 045 UV80



314 395 UV80



314 724 UV60



364 610 UV80



314 160 UV80



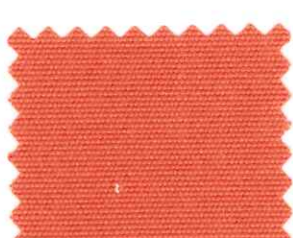
314 014 UV80



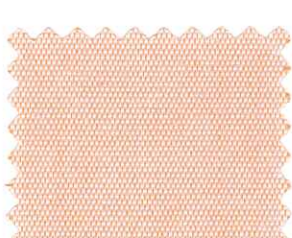
314 002 UV80



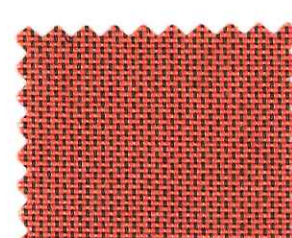
314 005 UV80



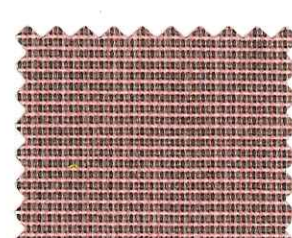
314 019 UV80



314 223 UV60



364 546 UV80



314 367 UV80



314 347 UV80



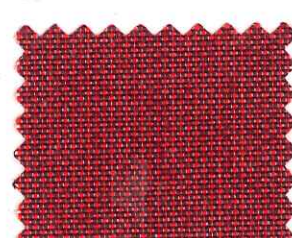
314 001 UV80



314 763 UV80



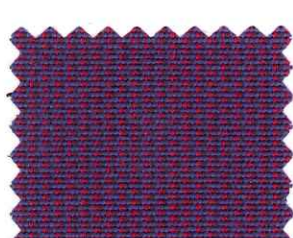
314 022 UV80



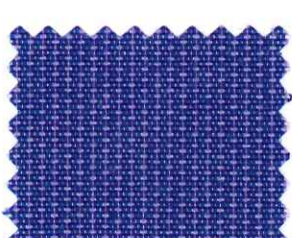
364 569 UV80



314 397 UV80



314 394 UV80



314 359 UV80



314 011 UV80



314 006 UV80



364 568 UV80



314 E52 UV80



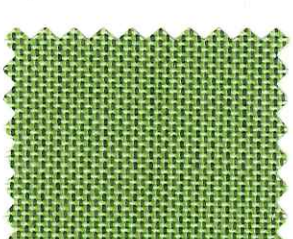
314 414 UV80



314 271 UV80



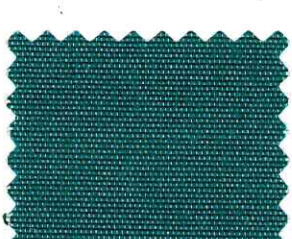
314 154 UV80



314 396 UV80



314 004 UV80



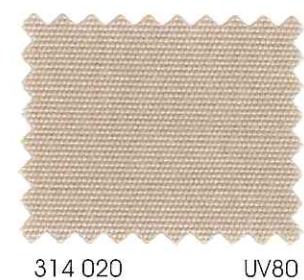
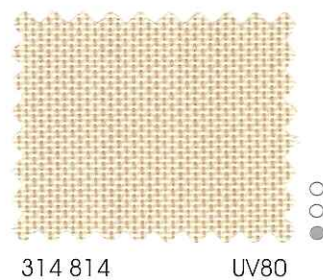
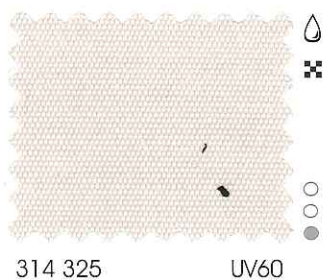
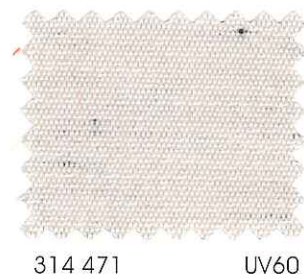
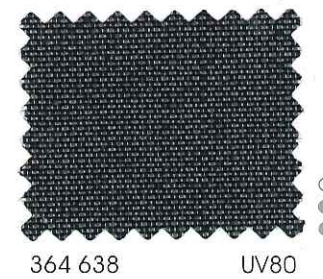
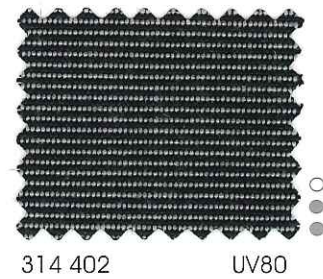
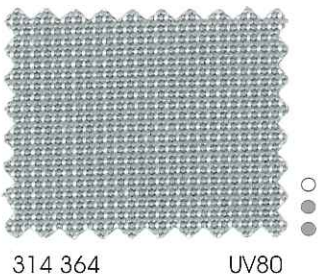
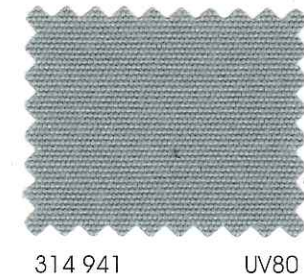
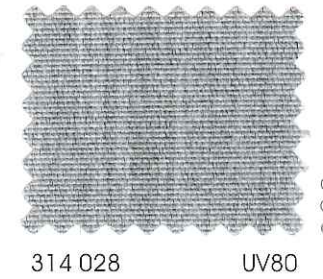
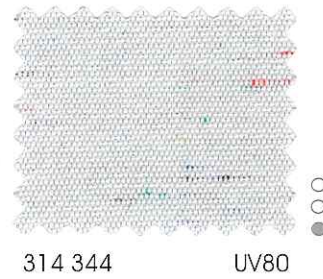
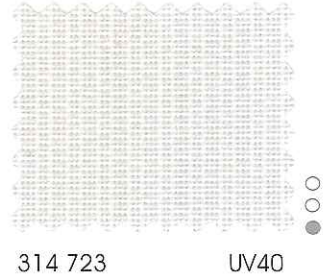
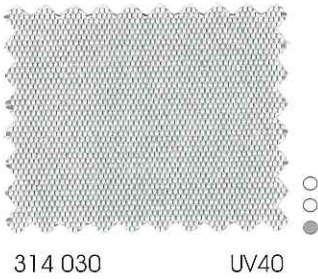
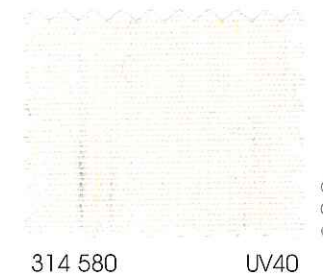
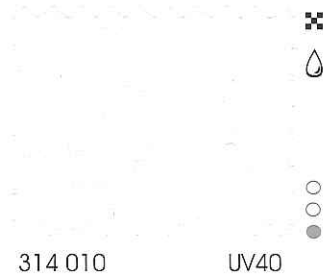
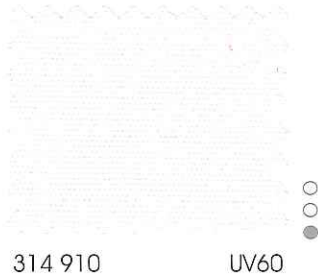
364 592 UV80

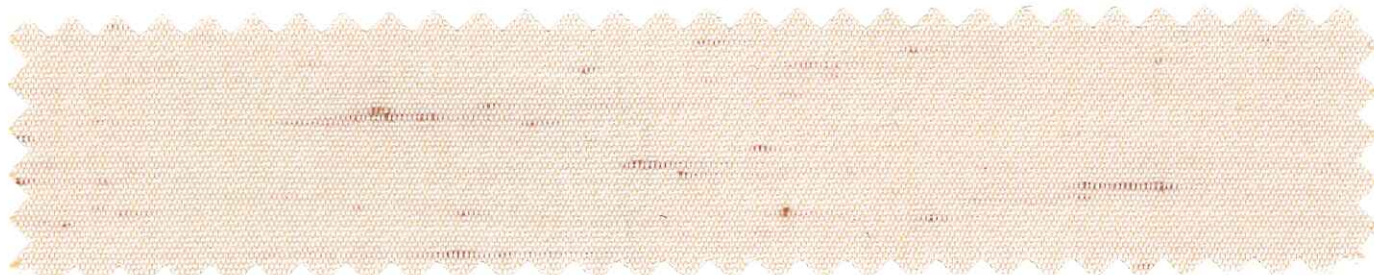


314 362 UV80



314 257 UV80





314 830 **CLASSIC 314** (Qualitätsmuster • quality sample • échantillon de qualité • muestra de calidad • campione dell'articolo)

UV60



314 003 **PANAMA 321** (Qualitätsmuster • quality sample • échantillon de qualité • muestra de calidad • campione dell'articolo)

UV80



314 007 **ALL WEATHER 308** (Qualitätsmuster • quality sample • échantillon de qualité • muestra de calidad • campione dell'articolo)

UV 80



☾ = auch als Art. 308 erhältlich • also available as art.308 • disponible également dans la qualité 308  
disponible también como artículo 308 • disponibile anche nell'articolo 308

● = Preiskategorie • price category • catégorie de prix  
● categoria prezzi • categoría de precios

⊠ = auch als Art. 321 erhältlich • also available as art.321 • disponible également dans la qualité 321  
disponible también como artículo 321 • disponibile anche nell'articolo 321



Die angegebenen technischen Daten sind Durchschnittswerte der laufenden Produktion	Technical data shown below are average values of the current production	Les données techniques ci-dessous sont des valeurs moyennes de la production courante	Características técnicas nuestros valores medios de producción	Le specifiche tecniche fornite indicano valori medi relativi alla produzione corrente		314	308	321
Grundgewebe	base	support	tejido base	base	DIN 60 001	PAC	PAC	PAC
Flächengewicht (g/m <sup>2</sup> )	total weight (g/m <sup>2</sup> )	poids total (g/m <sup>2</sup> )	peso total (g/m <sup>2</sup> )	peso totale (g/m <sup>2</sup> )	DIN EN ISO 12127	290	330	370
Höchstzugkraft (daN/5 cm)	tensile strength (daN/5 cm)	résistance à la rupture (daN/5 cm)	resistencia a la tracción (daN/5 cm)	resistenza allo strappo (daN/5 cm)	DIN EN ISO 13934-1	145/100	150/100	170/150
Höchstzugkraftdehnung (%)	max. tensile strength elongation (%)	élongation max. de la force de traction (%)	alargamiento máx. de la fuerza de tracción (%)	allungamento massimo della forza di trazione (%)	DIN EN ISO 13934-1	28/24	26/24	30/27
Weiterreißkraft (daN)	tear resistance (daN)	résistance à la déchirure amorcée (daN)	resistencia al desgarre (daN)	resistenza alla lacerazione iniziata (daN)	DIN EN ISO 13937-2	3.5/3.0	3.5/2.5	5.0/5.0
Wassersäule	water column	schmerber	columna de agua	colonna d'acqua	EN 20 811	370 mm	800 mm	460 mm
Wasserabweisung (Sprühverfahren)	water repellency (spray test)	résistance au mouillage superficiel (essai d'arrosage)	repelencia de agua (spray test)	Idrorepellenza (nebulizzazione)	EN 24 920	Note: 100	Note: 100	Note: 100
Ölabweisung	oil repellency	oléorésistance	propiedad oleófoba	Oleorepellenza dei colori	AATC 118	Note: 5	Note: 4	Note: 5
Farbechtheit	colour fastness	solidité des coloris	solidez del color	solidità di tinta	DIN EN ISO 105-B02	min. 7	min. 7	min. 7
Warenbreite: 120 cm	Width: 120 cm	Laize: 120 cm	Anchura: 120 cm	Altezza: 120 cm				

Entspricht den Anforderungen der Norm DIN EN 13 561 (Pkt. 15.2) • Corresponds with standard DIN EN 13 561 (Pkt. 15.2) • Répond aux exigences de la norme DIN EN 13 561(Pkt. 15.2) • Corrisponde alle richieste della norma DIN EN 13 561 (Pkt. 15.2) • Cumple las exigencias de la norma DIN EN 13 561 (Pkt. 15.2)

**Hinweis:** Änderungen die dem technischen Fortschritt dienen, behalten wir uns vor. Werte ohne Toleranzangaben sind Nennwerte mit einer Toleranz von ±5%. Die Angaben entsprechen unserem heutigen Kenntnisstand und sollen ohne Rechtsverbindlichkeit informieren. • **Note:** Subject to change in view of technical upgrades. Values indicated without tolerance levels are nominal values with a tolerance range of ±5%. All data presented here is given to the best of our current knowledge for guidance purposes and is not legally binding. • **Remarque:** Sous réserve de toute modification dans le cadre d'adméliorations techniques. Les valeurs mentionnées sans tolérance sont des valeurs nominales avec une tolérance de ±5%. Les indications correspondent à notre savoir actuel et sont données à titre informatif sans obligation juridique. • **Avvertenza:** Il produttore si riserva di apportare modifiche per il miglioramento tecnico del prodotto. I valori privi di tolleranza sono da intendersi come valori nominali con una tolleranza di ±5%. Tutti i dati corrispondono allo stato attuale delle nostre conoscenze; le informazioni fornite non sono legalmente vincolanti. • **Nota:** Sujeto a cambios según mejoras técnicas. Valores indicativos sin niveles de tolerancia son valores nominales con un promedio de tolerancia del ±5%. Estos datos son valores medios de la producción actual y corresponden al nivel de conocimiento presente. Son solo a título informativo y sin efecto legal alguno.